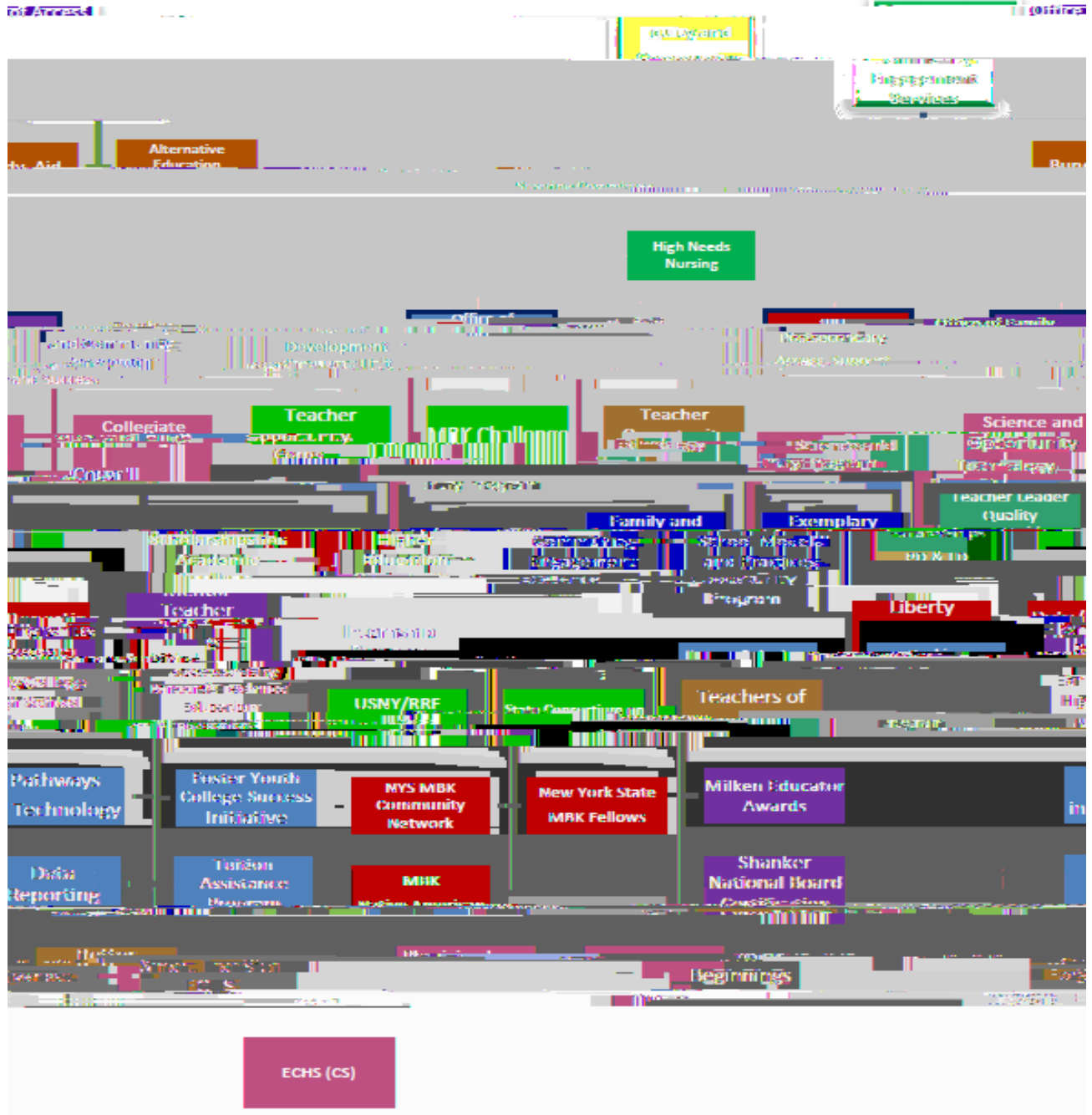


NEW YORK STATE HIGH QUALITY EDUCATION



MV' o-) Ohy

.Á) ° ° ° # ° \ ° h

.Á)) °) \ ° h o

.Á# K'8 ° ° = °

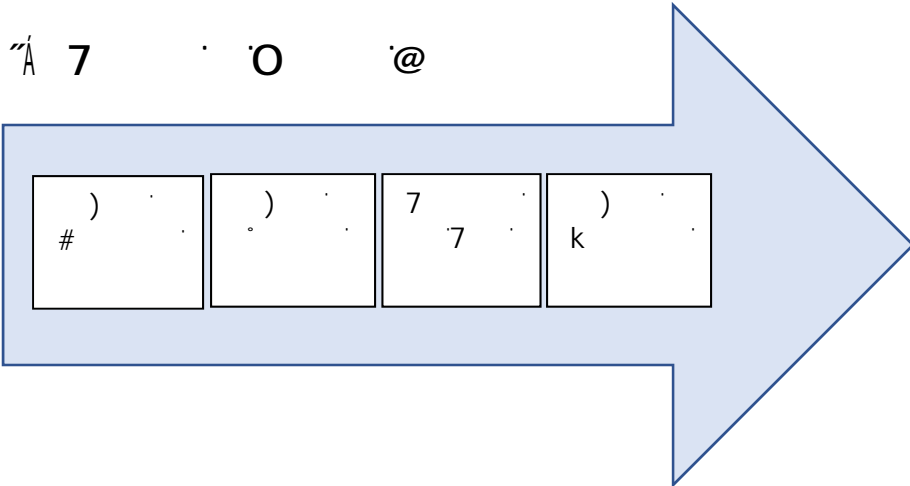
.Á" ° ° ° = ° \ °

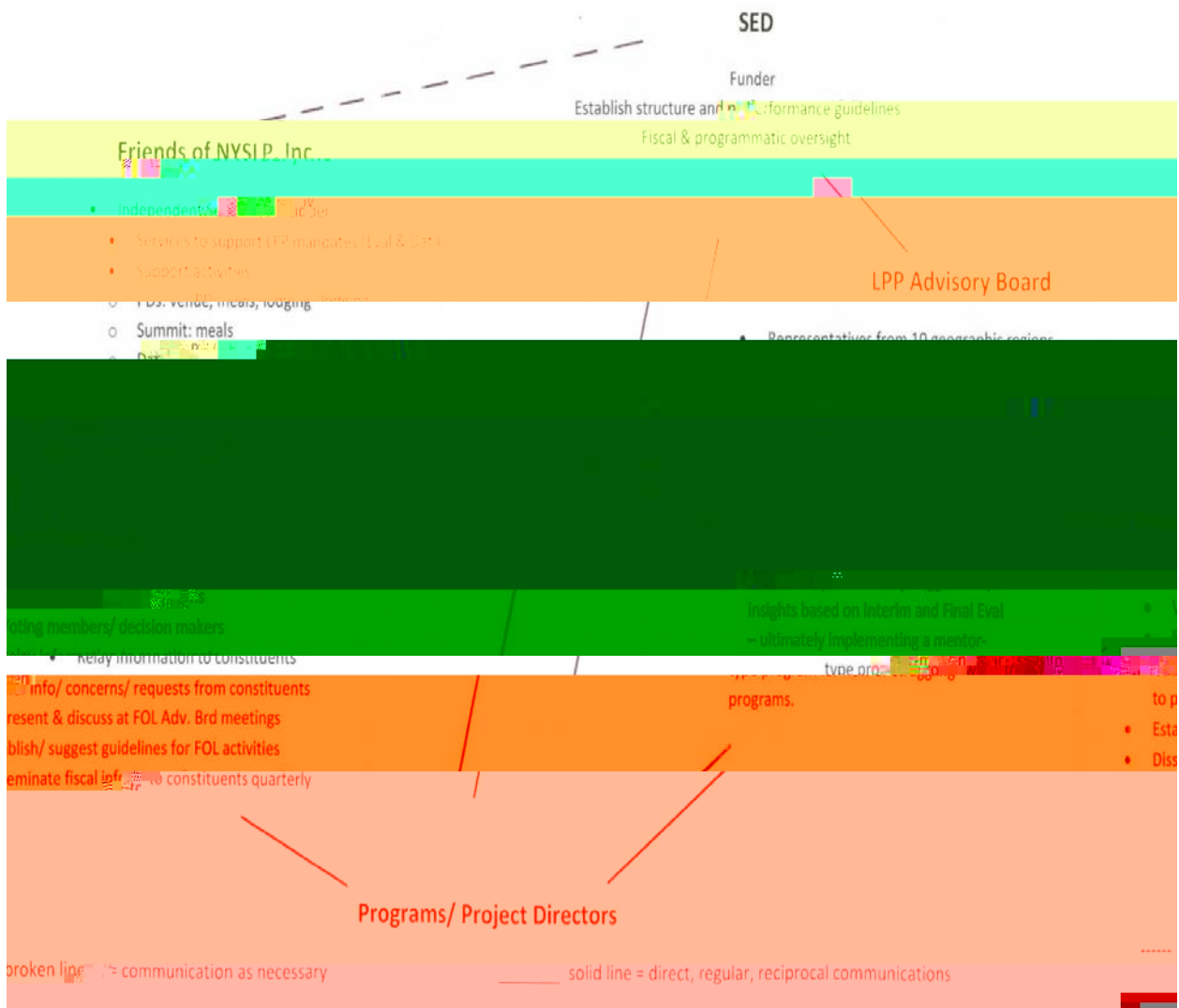
.ÁK " ° h ° k ° °

.ÁO) ° ° h ° °

Á ° #

Á 7 ° @





@

—

—

@k u o

u o

) U
y
Oh
Ohk ‡
)
- k ‡
k)) k ‡
h V'o-)
- V'o-)
" Oh V'o-)

" #

Oh
h o)
" \
y Oh'o

k 8 h @ 7 k

)	u	V	Oh)	h
k		k7h		
#				h Oh
#	Oh		Oh	
#	Oh			
M		@	7	k
-		Oh		
#	Oh		Oh	
#		Oh		hOh
#			Oh	
k		Oh		
.	Oh			
o		Oh	V' o-)	
o				h
#		Oh		
M				Oh
#	hOh		Oh	
k	Oh			
V		Oh h)	

-	h	U	M	h	@
8		k			
V		Oh			
o					
h		k			
\	8				
o	u	o	U	k	k#u
h	o	h			
k		h			
V			Oh'h		
V					
k	7	o	h		
V		Oh			
=	o		Oh		
V		Oh	7	k	h O
V	=	†			



|

‡ = ° u

• • • • •

# U	
‡ = ° u @# U) !

)

† = -V

@

† = \

@

= \ †

@

† = -k-

@

)

o @ 7
)
o =
o \
))
h @
.

k

u
7
o
u

#

@

h)
Ohio

s

) h	
‡ = ° u	8 o-) k7h' 7 u K h - h 8 o o h \ o - "
‡ = -V)	\
‡ = \ @	h) . " " # . " h \ - -š-Z -...- -v-] -] -]-Œ
.

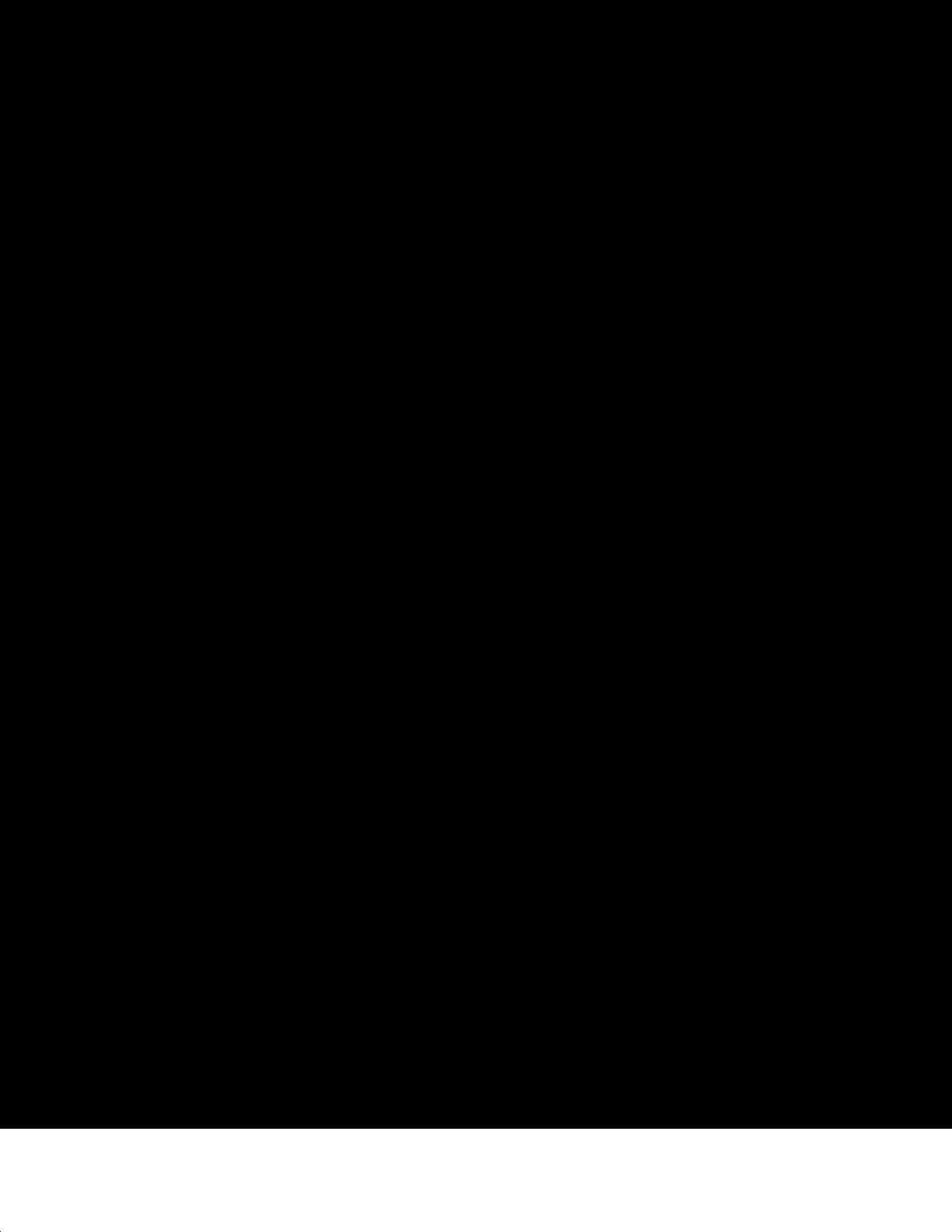
h	u - °
‡ = ° u @	h ° Oh u u h
‡ = -V)	#
‡ = \ @	h) o h) h y h # \ 8 h h h
= \ ‡	8 hOh o h
‡ = -k-)	Oh

h = #	
$\ddagger = u$ @	u u
$\ddagger = -V_i$)	h o h 0 ^

K'o U	
‡ = ° u \	° o @ o -) " h) o h h ° k u # k) # • P Z \$ # M % o] q À Ð ð 5 € W •

À] v 0 À

À Ð ð 5 € W •





PROPOSED BUDGET FOR A
BUDGET - TARRANT COUNTY
5-1-2015

Location: Tarrant County

3000000000

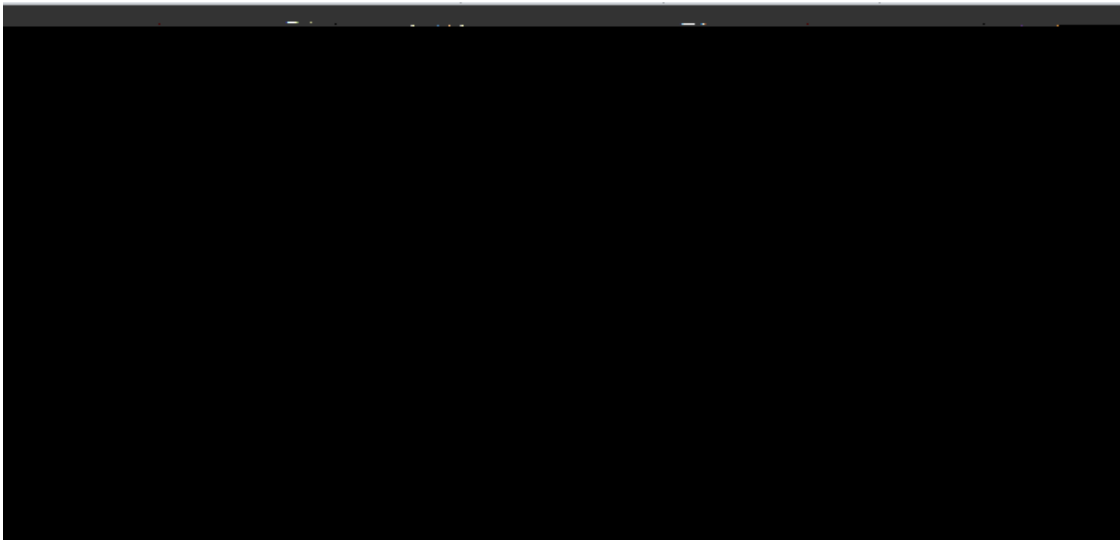
Agency Name:

Telephone:

County:

Code 15 – Professional Staff

Include only staff that are employees of LPP. Do not include consultants or per diem staff; do not include central administrative staff that are indirect costs.



.
@

SALARIES FOR SUPPORT STAFF			
Subtotal - Code 16			\$20,750
Specific Position Title	Full-Time Equivalent	Annualized Rate of Pay	Project Salary
Tutors (5)	30 hours per semester	\$350.00	\$1,750
Graduate Assistants (2)	40 hours per semester	\$2,000.00	\$4,000
Administrative Assistant	0.50	\$30,000.00	\$15,000

#

h

o

@

#

o

-

)

#

@

0

u

@ #
U) # "

INDIRECT COST

A.	Modified Direct Cost Base -- Sum of all preceding subtotals (codes 15, 16, 40, 45, 46, and 80 and excludes the portion of each subcontract exceeding	\$324,074
	ASSIGNMENT DESCRIPTIONS Manual Entry	
	Subcontract - Cost Base	\$25,926
se. =	\$324,074.00	
the	\$0.00	
For your information, maximum direct cost base		
To calculate Modified Direct Cost Base, reduce maximum direct cost base by		
[Redacted]		
[Redacted]		
[Redacted]		
[Redacted]		
[Redacted]		



" V

"A . .
 .A ‡
 "A /
 "A /
 .A ‡
 h h
 "A O
 "A #
 .A =
 .A @

2014-15 Composite Budget Summary

The figures to be entered in the LPP column (1) on lines with the FS-10 number codes must correspond to the

Expenditure Category	LPP (1)	Institution (2)	Other Sources (3)	TOTAL (4)
1 Salaries for Professional Personnel	15	\$175,000	\$27,625	\$202,625
2 Salaries for Non-Professional Personnel	16	\$20,750	\$0	\$20,750
a. Clerical/Secretarial		\$14,500		\$14,500
b. Courthouse Attendants		\$5,250		\$5,250
c. Other		\$0		\$0
3 Purchased Services	40	\$28,684	\$23,330	\$52,014
4 Supplies & Materials	45	\$13,561	\$0	\$13,561
a. Instructional		\$3,771		\$3,771
b. Student Organizations			\$5,329	\$5,329
c. Student Organizations			\$5,329	\$5,329
d. Staff Administrative			\$5,329	\$5,329
e. Other			\$0	\$0
4.074		\$10,000	\$10,000	\$20,000
5.926		\$5,834	\$5,834	\$11,668
6.075		\$12,727	\$12,727	\$25,454
6.076		\$15,957	\$15,957	\$31,914
6.077		\$13,561	\$13,561	\$27,122
6.078		\$13,561	\$13,561	\$27,122
6.079		\$13,561	\$13,561	\$27,122
6.080		\$13,561	\$13,561	\$27,122
6.081		\$13,561	\$13,561	\$27,122
6.082		\$13,561	\$13,561	\$27,122
6.083		\$13,561	\$13,561	\$27,122
6.084		\$13,561	\$13,561	\$27,122
6.085		\$13,561	\$13,561	\$27,122
6.086		\$13,561	\$13,561	\$27,122
6.087		\$13,561	\$13,561	\$27,122
6.088		\$13,561	\$13,561	\$27,122
6.089		\$13,561	\$13,561	\$27,122
6.090		\$13,561	\$13,561	\$27,122
6.091		\$13,561	\$13,561	\$27,122
6.092		\$13,561	\$13,561	\$27,122
6.093		\$13,561	\$13,561	\$27,122
6.094		\$13,561	\$13,561	\$27,122
6.095		\$13,561	\$13,561	\$27,122
6.096		\$13,561	\$13,561	\$27,122
6.097		\$13,561	\$13,561	\$27,122
6.098		\$13,561	\$13,561	\$27,122
6.099		\$13,561	\$13,561	\$27,122
6.100		\$13,561	\$13,561	\$27,122
6.101		\$13,561	\$13,561	\$27,122
6.102		\$13,561	\$13,561	\$27,122
6.103		\$13,561	\$13,561	\$27,122
6.104		\$13,561	\$13,561	\$27,122
6.105		\$13,561	\$13,561	\$27,122
6.106		\$13,561	\$13,561	\$27,122
6.107		\$13,561	\$13,561	\$27,122
6.108		\$13,561	\$13,561	\$27,122
6.109		\$13,561	\$13,561	\$27,122
6.110		\$13,561	\$13,561	\$27,122
6.111		\$13,561	\$13,561	\$27,122
6.112		\$13,561	\$13,561	\$27,122
6.113		\$13,561	\$13,561	\$27,122
6.114		\$13,561	\$13,561	\$27,122
6.115		\$13,561	\$13,561	\$27,122
6.116		\$13,561	\$13,561	\$27,122
6.117		\$13,561	\$13,561	\$27,122
6.118		\$13,561	\$13,561	\$27,122
6.119		\$13,561	\$13,561	\$27,122
6.120		\$13,561	\$13,561	\$27,122
6.121		\$13,561	\$13,561	\$27,122
6.122		\$13,561	\$13,561	\$27,122
6.123		\$13,561	\$13,561	\$27,122
6.124		\$13,561	\$13,561	\$27,122
6.125		\$13,561	\$13,561	\$27,122
6.126		\$13,561	\$13,561	\$27,122
6.127		\$13,561	\$13,561	\$27,122
6.128		\$13,561	\$13,561	\$27,122
6.129		\$13,561	\$13,561	\$27,122
6.130		\$13,561	\$13,561	\$27,122
6.131		\$13,561	\$13,561	\$27,122
6.132		\$13,561	\$13,561	\$27,122
6.133		\$13,561	\$13,561	\$27,122
6.134		\$13,561	\$13,561	\$27,122
6.135		\$13,561	\$13,561	\$27,122
6.136		\$13,561	\$13,561	\$27,122
6.137		\$13,561	\$13,561	\$27,122
6.138		\$13,561	\$13,561	\$27,122
6.139		\$13,561	\$13,561	\$27,122
6.140		\$13,561	\$13,561	\$27,122
6.141		\$13,561	\$13,561	\$27,122
6.142		\$13,561	\$13,561	\$27,122
6.143		\$13,561	\$13,561	\$27,122
6.144		\$13,561	\$13,561	\$27,122
6.145		\$13,561	\$13,561	\$27,122
6.146		\$13,561	\$13,561	\$27,122
6.147		\$13,561	\$13,561	\$27,122
6.148		\$13,561	\$13,561	\$27,122
6.149		\$13,561	\$13,561	\$27,122
6.150		\$13,561	\$13,561	\$27,122
6.151		\$13,561	\$13,561	\$27,122
6.152		\$13,561	\$13,561	\$27,122
6.153		\$13,561	\$13,561	\$27,122
6.154		\$13,561	\$13,561	\$27,122
6.155		\$13,561	\$13,561	\$27,122
6.156		\$13,561	\$13,561	\$27,122
6.157		\$13,561	\$13,561	\$27,122
6.158		\$13,561	\$13,561	\$27,122
6.159		\$13,561	\$13,561	\$27,122
6.160		\$13,561	\$13,561	\$27,122
6.161		\$13,561	\$13,561	\$27,122
6.162		\$13,561	\$13,561	\$27,122
6.163		\$13,561	\$13,561	\$27,122
6.164		\$13,561	\$13,561	\$27,122
6.165		\$13,561	\$13,561	\$27,122
6.166		\$13,561	\$13,561	\$27,122
6.167		\$13,561	\$13,561	\$27,122
6.168		\$13,561	\$13,561	\$27,122
6.169		\$13,561	\$13,561	\$27,122
6.170		\$13,561	\$13,561	\$27,122
6.171		\$13,561	\$13,561	\$27,122
6.172		\$13,561	\$13,561	\$27,122
6.173		\$13,561	\$13,561	\$27,122
6.174		\$13,561	\$13,561	\$27,122
6.175		\$13,561	\$13,561	\$27,122
6.176		\$13,561	\$13,561	\$27,122
6.177		\$13,561	\$13,561	\$27,122
6.178		\$13,561	\$13,561	\$27,122
6.179		\$13,561	\$13,561	\$27,122
6.180		\$13,561	\$13,561	\$27,122
6.181		\$13,561	\$13,561	\$27,122
6.182		\$13,561	\$13,561	\$27,122
6.183		\$13,561	\$13,561	\$27,122
6.184		\$13,561	\$13,561	\$27,122
6.185		\$13,561	\$13,561	\$27,122
6.186		\$13,561	\$13,561	\$27,122
6.187		\$13,561	\$13,561	\$27,122
6.188		\$13,561	\$13,561	\$27,122
6.189		\$13,561	\$13,561	\$27,122
6.190		\$13,561	\$13,561	\$27,122
6.191		\$13,561	\$13,561	\$27,122
6.192		\$13,561	\$13,561	\$27,122
6.193		\$13,561	\$13,561	\$27,122
6.194		\$13,561	\$13,561	\$27,122
6.195		\$13,561	\$13,561	\$27,122
6.196		\$13,561	\$13,561	\$27,122
6.197		\$13,561	\$13,561	\$27,122
6.198		\$13,561	\$13,561	\$27,122
6.199		\$13,561	\$13,561	\$27,122
6.200		\$13,561	\$13,561	\$27,122

The University of the State of New York		REQUEST FOR FUNDS FOR A	
Contract#		Project#	
Agency Code: _____		Funding Source: _____	
Agency Name: _____		Mailing Address: _____	
Street _____			
City _____		State _____	Zip Code _____
Contact Person: _____		Telephone: _____	
E-Mail Address: _____		MONTH YEAR	
CHIEF ADMINISTRATOR'S CERTIFICATION			
Date: _____		Signature: _____	
Amount of Approved Budget (include approved amendments) _____			
1. Director of the State Office of General Services		4. Chief Executive Officer of State of New York	

70 7

U ‡ " - ' .

"Á V' o) U ‡ \

"Á U ‡ " - ' V' o) U ‡

"Á .Á 7
7 - † o h uV ©

"Á u U ‡ " - '

"Á)
#

"Á ° Oh h o

"Á U ‡ " - ' V\ u'

"Á - U ‡ " - '
7o

"Á

U ‡ "- 7o

“Á M 8 #
“Á M 8

“Á 8 U ‡ "- y
U ‡ "- y h
u
U ‡ "-
y h

y
U ‡ "- 7

U ‡ "- 8 # ‡

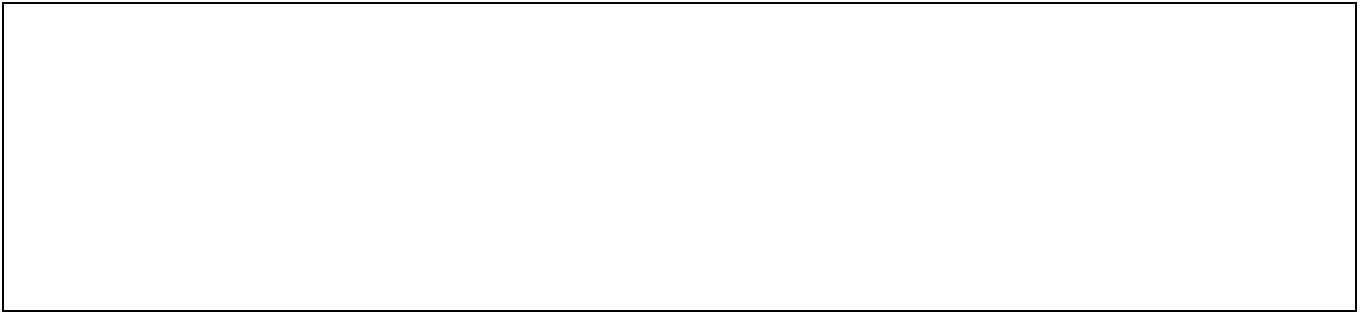
	Budget Category	Amount budgeted for items included from	Total
1.	Total Budget		
2.	Professional Salaries		
3.	Support Staff Salaries		
4.	Travel Expenses		
5.	Indirect Costs		
6.	Student Stipends /Tuition		
7.			
8.	Line 1 minus Lin		
9.	60% percentage (30% multiplied by Line 9		
10.	Line 8 n		

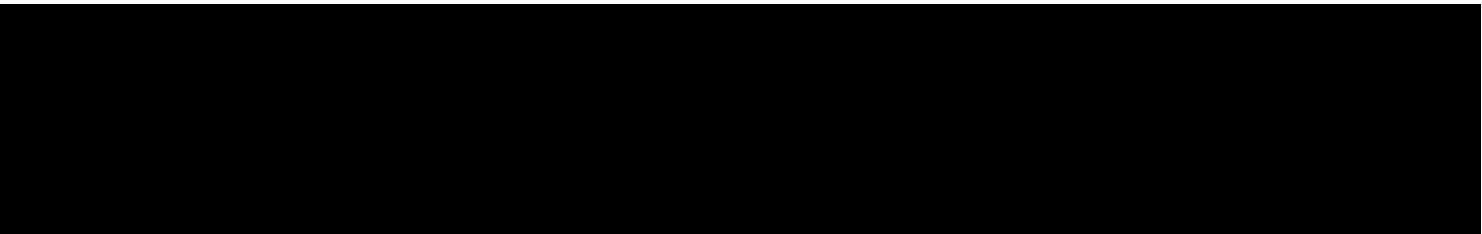
This form is provided with the Library Continuing Program 2017-2018

		<hr style="border: 0; border-top: 1px solid black; margin-bottom: 20px;"/> <hr style="border: 0; border-top: 1px solid black;"/>

K @ ý	=	- @ 7 o h	Oh
) =	- ...	Ohio h
) u	- -	Oh Oh
	K)	" u u Oh	Oh #
	u #	@	
	- - A		x "ÓĐ g7P6À 5X x "Ñµ i

ÝZ] • C F





†@M u

)

8 0

@ M o h
y
u o
y y u A

A

†@M u		
)		
h		o
h o h	hOh	
h)		k
h)		u
k#u		° k # u k#u K K @ k#u
k -		° k K K @ k K
k h	k7h	° k h k7h @
o-)k-7		<u>o-)</u> y
o@oU		<u>o@oU</u>
o h		† Q° 50102019A11E018/T1_0 1 Tf7 scn /J /A461C10 A

†@o	#
# U	° @ ° ° °
	7 # ° °
	8 # ° °
	= † ° °
	@ # ° °
	# k ° ° °
	- # ° ° ° °
	- h ° ° ° °
O #)	#) ° ° ° °
	# ° h ° ° ° ° ° °
	O # ° ° ° ° °
	O U ° ° ° ° °
	† ° ° ° ° ° °
	#) ° ° ° ° °
	‡ ° ° ° ° ° °
	O ° ° ° ° °
	U ° ° ° ° ° °
	\ ° ° ° ° ° °
	\) ° ° ° ° ° °
	o O ° ° ° ° ° °
	o ° ° ° ° ° ° °
	o † ° ° ° ° ° ° °
	u ° ° ° ° ° ° °